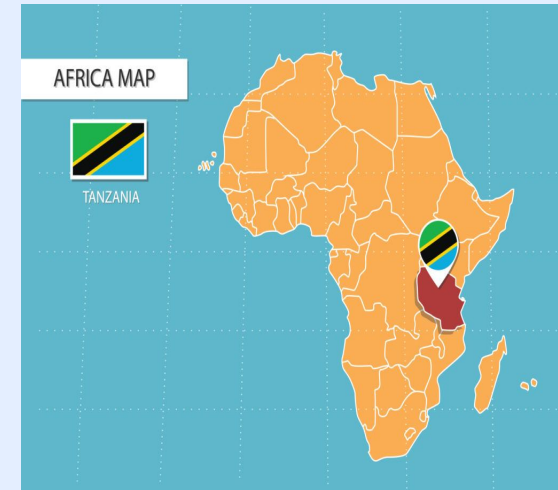
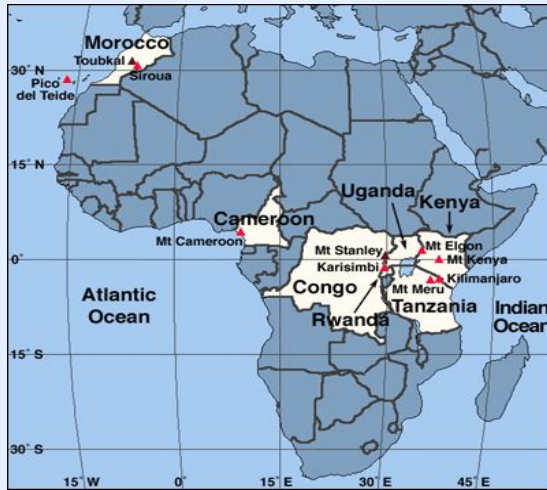


WELCOME TO YEAR 1



Olympus Class



Karisimbi Class



Kilimanjaro Class

WELCOME TO YEAR 1

We will discuss:

- Curriculum
- Homework
- PE
- Lunches
- Communication
- Questions

Year 1 example Timetable

	8:45 – 9	9-9:45	9:45 – 10:30	10:30-10.45	10:45 – 11	11:00 – 12.00	12:00 1:00	1:00 – ...	2:15- 3:10		3:10 3:20	
M	Team Time	Phonics Groups	Maths	B R E A K	Maths Fluency	PE	L U N C H	English	2.05-2.15 Play	2.25-3.10 RE	Class Book	
T	SLT Assembly	Phonics Groups	Maths		Class book	English		Science	2.05-2.15 Play	2.15-3.15 Art/DT		
W	Phase assembly	Phonics Groups	Maths		Maths Fluency	English		1-1.30 PHSE	1.30-2.30 Computing	2.30-2.40 Play	Library & Class Book	
TH	Music Assembly	Phonics Groups	Maths		Maths Fluency	English		PPA 1.00-1.45 PE 1.45-2.35 Music 2.35-3.20 Spanish				
FR	SC Meeting / Sharing Assembly	Phonics Groups	Maths		Maths Fluency	English		1.00-2.00 Humanities	Class Book	2:15 Home Time		

Year 1 Curriculum

Me & My World



Autumn

Time Machine- Living History!



Spring

The Great Fire



London Today !



Summer

Year 1



Autumn Term

Me and My World



Science

Animals including humans
 Name common animals.
 Human body and senses

Geography

Name, locate and identify
 characteristics of the four
 countries and capital cities of the
 UK.

Computing

Computer Science:
 Coding using Bee Bots

Art

Mixed media and painting

Key Artist
 Gustav Klimt
 Les Williams

PE and Games

Fitness & Fundamentals
 Ball Skills & Dance

RE

Harvest
 How and why do people
 celebrate harvest?
Christmas
 How and why do Christians
 celebrate Christmas?

DT

Structure:
 London Landmarks
 Children explore a
 variety of materials and
 processes to create their
 own work.

PSHE and Citizenship

Class Charter,
 Health & Wellbeing,
 Relationships,
 Living in the wider
 world

Music

"Sounds
 Interesting" –
~~Chorango~~ Hey
 You!
 Winter Concert

Spanish

Understand countries where Spanish is
 spoken
 Respond to and say greetings and goodbyes
Buenos días, hola, adiós, buenas noches.
 Respond to and say 'my name is...' 'What's
 yours?' Me llamo... and respond to y tú?
 Learn simple songs and rhymes
 Learn the colours and family colours
 mi padre, mi madre, mi hermano, mi
 hermana.

Themed Weeks

Maths Week
 WB 25th September
Black History
 WB Monday 2nd October
 (3 weeks)
Kindness (Anti-bullying) Week
 WB 13th November

Dress Up Days

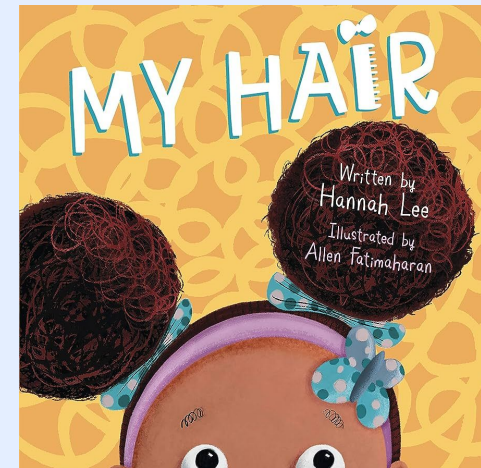
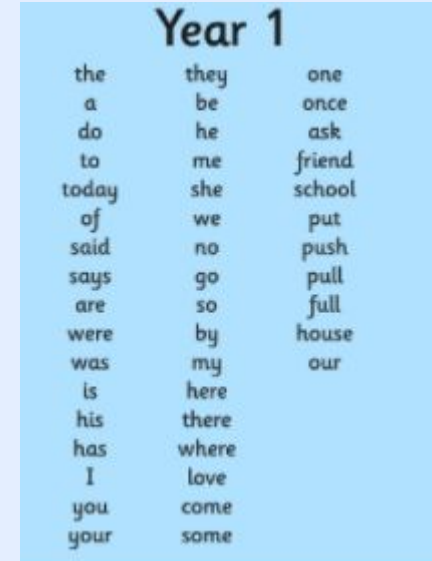
Maths Rock Star Dress Up
 Friday 29th September
 Wear Red for Show Racism the Red Card
 Friday 20th October
Odd Socks Day
 Monday 13th November
Children in Need – Pajamas
 Friday 17th November
Christmas Jumpers
 Wednesday 20th December

Other Dates to Remember

Individual Photo Day
 Tuesday 19th September
INSET Day
 Monday 30th October
Parent's Evening
 Tues 14th and Wed 15th November
KS1 Winter Concerts
 Tuesday 12th December

English

Reading, Writing & SPAG



Maths – Year 1 Overview

	Week 1	Week 2	Week 3	Week 4	Week 5	Week 6	Week 7	Week 8	Week 9	Week 10	Week 11	Week 12
Autumn term	Number Place value (within 10) VIEW					Number Addition and subtraction (within 10) VIEW				Geometry Shape VIEW	Consolidation	
Spring term	Number Place value (within 20) VIEW	Number Addition and subtraction (within 20) VIEW			Number Place value (within 50) VIEW	Measurement Length and height VIEW	Measurement Mass and volume VIEW					
Summer term	Number Multiplication and division VIEW	Number Fractions VIEW	Geometry Position and direction VIEW	Number Place value (within 100) VIEW	Measurement Money VIEW	Measurement Time VIEW					Consolidation	

Maths

Year 1 | Autumn term | Block 1 - Place value

Small steps

Step 1

Sort objects

Step 2

Count objects

Step 3

Count objects from a larger group

Step 4

Represent objects

Step 5

Recognise numbers as words

Step 6

Count on from any number

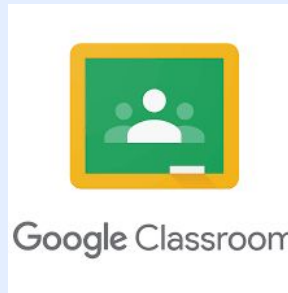
Step 7

1 more

Step 8

Count backwards within 10

Year 1 Homework



Reading



Maths



Spelling



Year 1 Homework

To be completed by the end of each term.



YEAR 1 AUTUMN PROJECT

Our Topic this term is Me and my World. We would love to find out more about your family. Please could you make a Family Tree and be as creative and inventive as you like. It doesn't have to be an actual 'tree', it could be in any form you desire. All we ask is that it tells us, either through pictures, words or both, all about your family.

Please bring in the project before 5th December 2023.

Children will be invited to bring their project into school towards the end of term to share their learning.

PE Days and PE Kit

Year 1 Classes have **PE** on:

Olympus: Wednesday & Thursday

Karisimbi: Monday & Thursday

Kilimanjaro: Thursday & Friday




Please ensure that your child comes to school wearing their **PE kit** on these days.

**PLEASE LABEL
ALL CLOTHING**

School Lunch

Universal free lunches this academic year for all children




Week 2

[WEEKLY MENU]

Weeks Commencing: Mon 11th Sept - Mon 9th Oct - Mon 13th Nov - Mon 11th Dec

	Monday	Tuesday	Wednesday	Thursday	Friday
Main Dish of the Day	Roasted Vegetable Lasagne (E*, G, MK)	Meat Feast Pizza (G, MK)	Cheesy Pasta Bake (CE, G, MK)	Shepherds Pie (CE, MK)	Battered Fish & Chips (F, G)
Vegetarian Dish of the Day	Tomato and Basil Pasta (CE, G)	Cheese and Tomato Pizza (G, MK)	Vegetable Curry & Rice (CE, G*)	Winter Vegetable Tart (E, G, MK)	Homemade Vegan Sausage Roll & Chips (G)
Vegetable Choice	Garlic Bread and Green Salad (G, MK)	Seasoned Potato Wedges & Sweetcorn	Seasonal Vegetables	Mash Potato & Seasoned Vegetables (MK)	Beans or Peas
Dessert of the Day	Apple Flapjack (G)	Fruit Jelly	Jam Sponge & Custard (E, G, MK, SO*)	Selection of Fruit Mousse (MK)	Chocolate Orange Sponge with Chocolate Sauce (E, G, MK, SO)
Jacket Potato Bar	See Board for Details	See Board for Details	See Board for Details	See Board for Details	See Board for Details
Cold Selection	Salad Bar Homemade Bread (G*, G, MK, SO) Fresh Fruit	Salad Bar Homemade Bread (E*, G, MK, SO) Fresh Fruit	Salad Bar Homemade Bread (E*, G, MK, SO) Fresh Fruit	Salad Bar Homemade Bread (E*, G, MK, SO) Fresh Fruit	Salad Bar Homemade Bread (E*, G, MK, SO) Fresh Fruit



Millfields Community Primary School

Allergens:
 CE = Celery, CR = Crustacean, E = Eggs, F = Fish, G = Cereals Containing Gluten, L = Lupin, MK = Milk, MO = Molluscs, MU = Mustard, N = Nuts, P = Peanuts, SO = Soya, SU = Sulphur, SE = Sesame Seeds
 * = May Contain

See the menus on our website: [Click Here](#)

[Website:](#)
[School Lunch](#)

Important Dates

Themed Weeks

Maths Week

WB 25th September

Black History

WB Monday 2nd October
(3 weeks)

Kindness (Anti-bullying) Week

WB 13th November

Assessment Week

WB 27th November



Dress Up Days

Maths Rock Star Dress Up

Friday 29th September

Wear Red for Show Racism the Red Card

Friday 20th October

Odd Socks Day

Monday 13th November

Children in Need – Pyjamas

Friday 17th November

Christmas Jumpers

Wednesday 20th December

Other Dates to Remember

Individual Photo Day

Tuesday 19th September

INSET Day

Monday 30th October

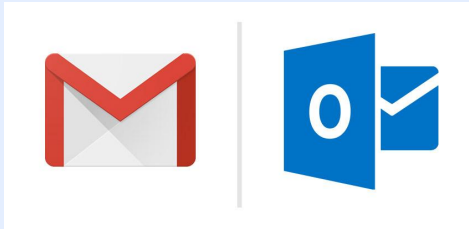
Parent's Evening

Tues 14th and Wed 15th November

KS1 Winter Concerts

Tuesday 12th December

Communication



info@millfields.hackney.sch.uk





Millfields Mag
FRIDAY 28TH JUNE 2019
VIERNES 28 DE JUNIO DE 2019
www.millfields.hackney.sch.uk E-mail: info@millfields.hackney.sch.uk




Millfields Musical Magnificence









It has been another busy week at Millfields, especially for all our cycling community! Lots of the Year 5 children have been taking part in Bikeability lessons — learning how to have a road-worthy bike and how to ride safely on the roads. Well done to all the children who successfully completed the course. Yesterday, 36 of the Year 5 children also took part in Bike Around the Borough — an event that takes place every year! Hundreds of Hackney school children take to the roads for a mass ride around the borough, organised by the Council to provide a chance for students to practice the skills they've learned through national standards cycle training and to help them see how easy it is to travel around Hackney by bike. The riders started at Hackney Downs, travelling from there to Clissold Park, before heading on to London Fields, past Hackney Town Hall and back to Hackney Downs. Then today, many of our Cycling Team have taken part in a sponsored cycle ride — they did the last 10 miles of a 50 mile ride and have so far raised an amazing £1,750. Thanks to all the families and friends who have donated. They had beautiful weather today and cycled up the towpath to Ware. They hope to reach their target of £1950 by the end of today in order to raise money for World Bicycle Relief that will provide 20 bikes for children to ride to school in poorer countries across the world. If you can and would like to help, please click on the link: <https://www.justgiving.com/Millfields50miles>. Thank you so much to parents, Paul and Nicky, who organised the whole thing and to all the parents and staff

Important Dates

Summer Fair
Saturday 29th June

Sports Week
1st—5th July

Safety Awareness Week
8th—12th July

London Day
18th July

First day of Autumn Term
Weds 4th September

Attendance

Week beg: 17th June

Our school target: 96.5%

Last week: 95.1%

Winning classes:
KS1 Brown (98.3%)
KS2 Macintosh (99.1%)

Well done!

Tuck Shop





amohi@millfields.hackney.sch.uk

Associate Assistant Head/Phase Lead for Key Stage 1

kfry@millfields.hackney.sch.uk

SENCO - Special educational needs coordinator



cgreen@millfields.hackney.sch.uk

Senior Admin Officer - Attendance/Admissions

iudeaja@millfields.hackney.sch.uk

Extended School Manager/Clubs

Questions

