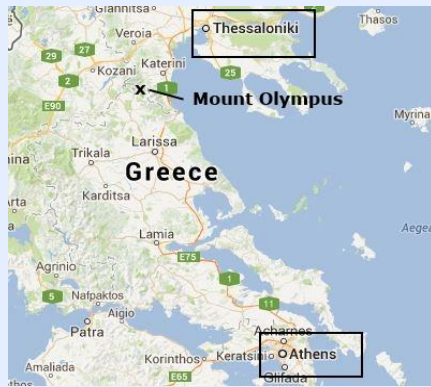


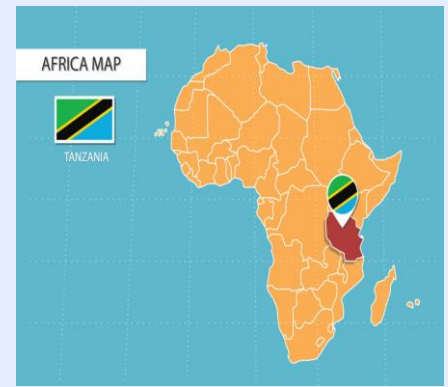
WELCOME TO YEAR 1 2024-25



Olympus Class



Karisimbi Class



Kilimanjaro Class

WELCOME TO YEAR 1

We will discuss:

- Curriculum
- Homework
- PE
- Lunches
- Communication
- Questions

Year 1 example Timetable

	8:35 – 9:00	9.00 – 9.45	9.45 – 10.30	10:30 - 10.45	10.45 – 11.30	11.30 – 11.50	11.50 – 12.40	12.40-2.00	2.00 – 2.15	2.00 – 3.10	3.10
M	Team Time	Phonics/ Reading	Maths	BREAK	English	Maths Fluency	LUNCH	ART		PHSE Zones lesson 3	C l a s s s t o r y T i m e
T	Spelling Check Age Phase Assembly	Phonics/ Reading	Maths		English	Maths Fluency		Science		Computing	
W	SLT Assembly	Phonics/ Reading	Maths		English	Maths Fluency		Humanities		R & W	
TH	Music Assembly	Phonics/ Reading	Maths		English	Maths Fluency		12.40-1.30 Music	1.30-2.20 Spanish	2.20-3.15 PE	
FR	8.35-9.05 Parent Reading	9.10-9.45 SC Meeting Handwriting or Sharing Assembly	Maths		English	Maths Fluency		12.40-1. 30 PE (TH)	PHSE Zones Lesson 4	Class Storytime & Home 2.20	

Year 1 Curriculum

Me & My World



Autumn

Time Machine- Living History!



Spring

The Great Fire



London Today !



Summer

Year 1



Autumn

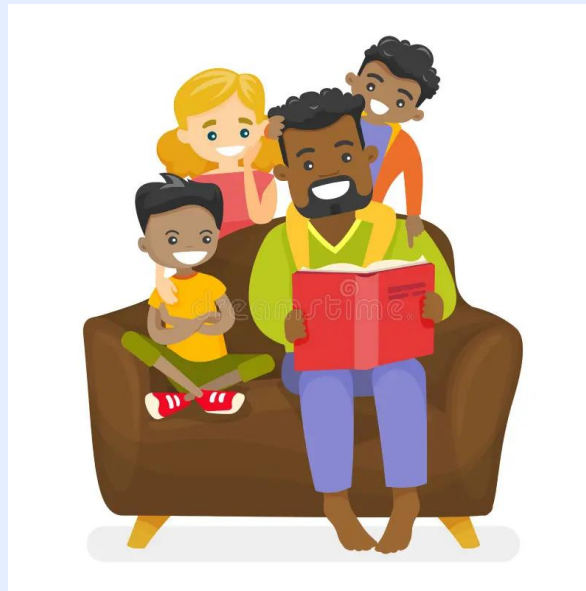
Spring

Summer

Year 1

Parent Reading

Every Friday 8:35- 8:55



Autumn Term



Me and My World



Science

Animals including humans
Name common animals.
Human body and senses

Geography

Name, locate and identify characteristics of the four countries and capital cities of the UK.

Computing

Computer Science:
Coding using Bee Bots

Art

Mixed media and painting

Key Artist
Gustav Klimt
Les Williams

PE and Games

Fitness & Fundamentals
Ball Skills & Dance

RE

Harvest
How and why do people celebrate harvest?
Christmas
How and why do Christians celebrate Christmas?

DT

Structure:
London Landmarks
Children explore a variety of materials and processes to create their own work.

PSHE and Citizenship

Class Charter,
Health & Wellbeing,
Relationships,
Living in the wider world

Music

"Sounds Interesting" –
Chorale: Hey You!
Winter Concert

Spanish

Understand countries where Spanish is spoken
Respond to and say greetings and goodbyes
Buenos días, hola, adiós, buenas noches.
Respond to and say 'my name is...' 'What's yours?' Me llamo... and respond to y tú?
Learn simple songs and rhymes
Learn the colours and family members
mi padre, mi madre, mi hermano, mi hermana.

Themed Weeks

Maths Week
WB 25th September
Black History
WB Monday 2nd October
(3 weeks)
Kindness (Anti-bullying) Week
WB 13th November

Dress Up Days

Maths Rock Star Dress Up
Friday 29th September
Wear Red for Show Racism the Red Card
Friday 20th October
Odd Socks Day
Monday 13th November
Children in Need – Pyjamas
Friday 17th November
Christmas Jumpers
Wednesday 20th December

Other Dates to Remember

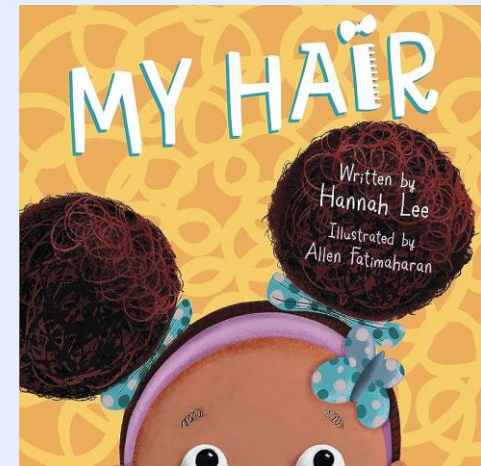
Individual Photo Day
Tuesday 19th September
INSET Day
Monday 30th October
Parent's Evening
Tues 14th and Wed 15th November
KS1 Winter Concerts
Tuesday 12th December

English

Reading, Writing & SPAG



Year 1		
the	they	one
a	be	once
do	he	ask
to	me	friend
today	she	school
of	we	put
said	no	push
says	go	pull
are	so	full
were	by	house
was	my	our
is	here	
his	there	
has	where	
I	love	
you	come	
your	some	



Maths – Year 1 Overview

	Week 1	Week 2	Week 3	Week 4	Week 5	Week 6	Week 7	Week 8	Week 9	Week 10	Week 11	Week 12
Autumn term	<div>Number</div> <div>Place value (within 10)</div> <div>VIEW</div>					<div>Number</div> <div>Addition and subtraction (within 10)</div> <div>VIEW</div>				<div>Geometry Shape</div> <div>VIEW</div>	<div>Consolidation</div>	
Spring term	<div>Number</div> <div>Place value (within 20)</div> <div>VIEW</div>	<div>Number</div> <div>Addition and subtraction (within 20)</div> <div>VIEW</div>		<div>Number</div> <div>Place value (within 50)</div> <div>VIEW</div>		<div>Measurement</div> <div>Length and height</div> <div>VIEW</div>	<div>Measurement</div> <div>Mass and volume</div> <div>VIEW</div>					
Summer term	<div>Number</div> <div>Multiplication and division</div> <div>VIEW</div>	<div>Number</div> <div>Fractions</div> <div>VIEW</div>	<div>Geometry Position and direction</div> <div>VIEW</div>	<div>Number</div> <div>Place value (within 100)</div> <div>VIEW</div>	<div>Measurement Money</div> <div>VIEW</div>	<div>Measurement</div> <div>Time</div> <div>VIEW</div>	<div>Consolidation</div>					

Maths

Year 1 | Autumn term | Block 1 – Place value

Small steps

Step 1

Sort objects

Step 2

Count objects

Step 3

Count objects from a larger group

Step 4

Represent objects

Step 5

Recognise numbers as words

Step 6

Count on from any number

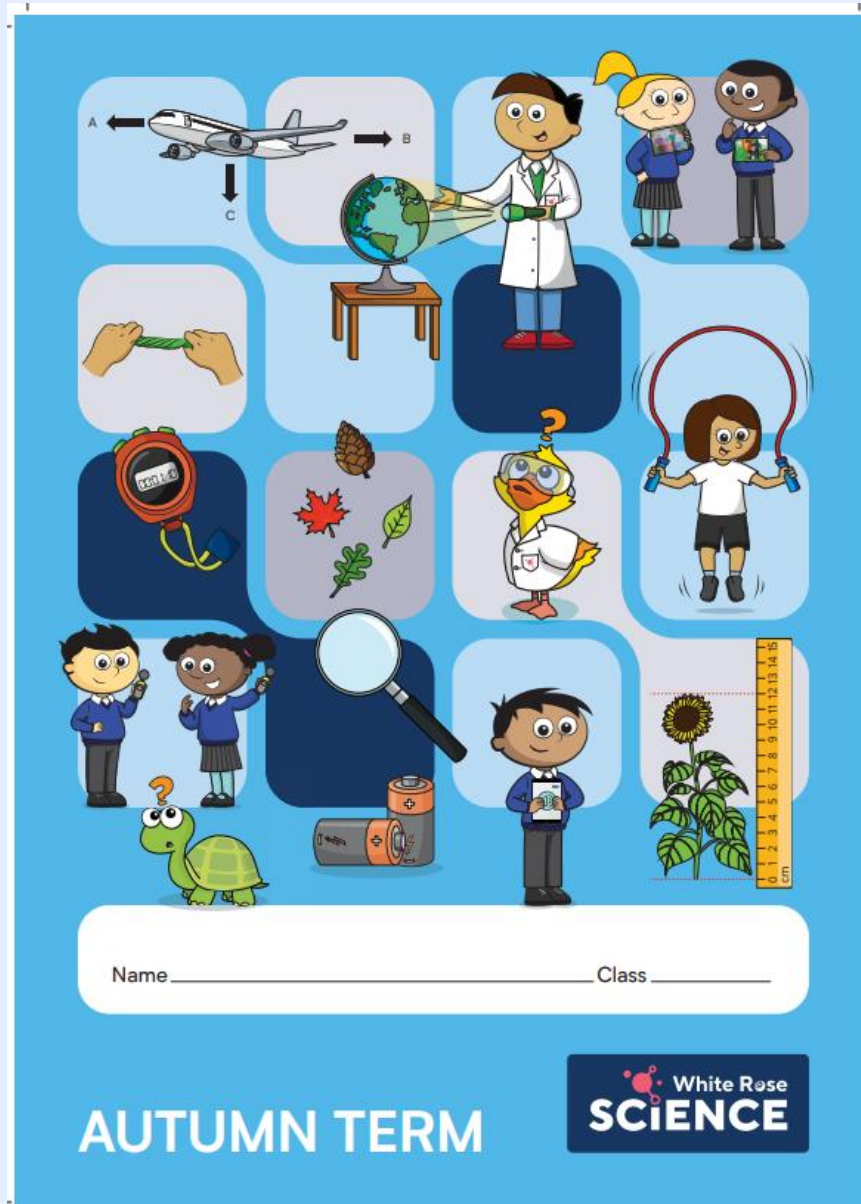
Step 7

1 more

Step 8

Count backwards within 10

Science



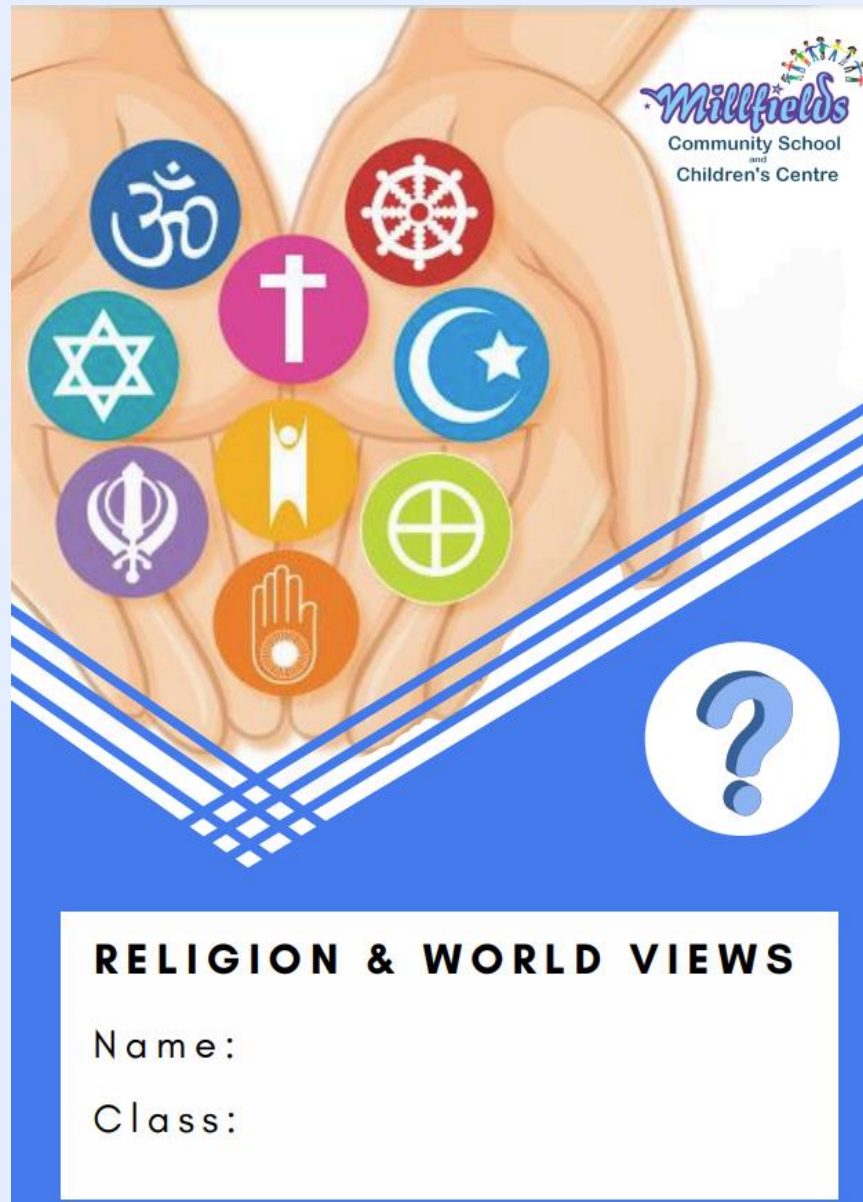
Science

	Week 1	Week 2	Week 3	Week 4	Week 5	Week 6	Week 7	Week 8	Week 9	Week 10	Week 11	Week 12
Autumn term	<div>Biology</div> <div>The human body</div> <div>VIEW</div> <div>Free trial</div>					<div>Biology</div> <div>Seasonal chan...</div> <div>VIEW</div>	<div>Chemistry</div> <div>Materials</div> <div>VIEW</div>			<div>Biology</div> <div>Seasonal chan...</div> <div>VIEW</div>		
Spring term	<div>Biology</div> <div>Planting A</div> <div>VIEW</div>	<div>Biology</div> <div>Animals</div> <div>VIEW</div>				<div>Sustainability</div> <div>Caring for the planet</div> <div>VIEW</div> <div>🌱</div>	<div>Biology</div> <div>Seasonal chan...</div> <div>VIEW</div>	<div>Biology</div> <div>Planting B</div> <div>VIEW</div>	<div>Consolidation</div>			
Summer term	<div>Biology</div> <div>Plants</div> <div>VIEW</div>					<div>Biology</div> <div>Planting C</div> <div>VIEW</div>	<div>Sustainability</div> <div>Growing and cooking</div> <div>VIEW</div> <div>🌱</div>	<div>Biology</div> <div>Seasonal chan...</div> <div>VIEW</div>	<div>Consolidation</div>			

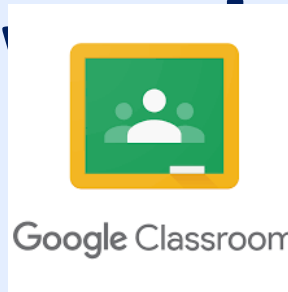
Activate Windows

Activate Windows
Go to Settings to activate Windows.

Religion & World Views



Year 1 Home



Reading



Maths




Spelling

Year 1		
the	they	one
a	be	once
do	he	ask
to	me	friend
today	she	school
of	we	put
said	no	push
says	go	pull
are	so	full
were	by	house
was	my	our
is	here	
his	there	
has	where	
I	love	
you	come	
your	some	

Year 1 Homework

To be completed by the end of each term.



YEAR 1 AUTUMN PROJECT

Our Topic this term is Me and my World. We would love to find out more about your family. Please could you make a Family Tree and be as creative and inventive as you like. It doesn't have to be an actual 'tree', it could be in any form you desire. All we ask is that it tells us, either through pictures, words or both, all about your family.

Please bring in the project before 5th December 2023.

Children will be invited to bring their project into school towards the end of term to share their learning.

PE Days and PE Kit

Year 1 Classes have **PE** on:

Olympus: Monday & Thursday

Karisimbi: Thursday & Friday

Kilimanjaro: Thursday & Friday



Please ensure that your child comes to school wearing their **PE kit** on these days.

**PLEASE LABEL
ALL CLOTHING**



Important Dates

INDIVIDUAL PHOTOS: 17th September 2024

Nativity

Y1 Karisimbi - 10th December

Y1 Kilimanjaro- 11th December

Y1 Olympus -12th December

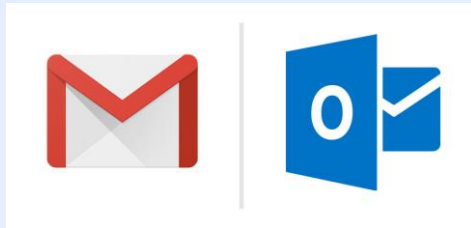
Winter concerts- 17th December

PARENTS EVENING

15th / 16th October



Communication



info@millfields.hackney.sch.uk



Millfields Mag

FRIDAY 28TH JUNE 2019
VIERNES 28 DE JUNIO DE 2019

www.millfields.hackney.sch.uk E-mail: info@millfields.hackney.sch.uk

Millfields Musical Magnificence



It has been another busy week at Millfields, especially for all our cycling community! Lots of the Year 5 children have been taking part in Bikeability lessons — learning how to have a road-worthy bike and how to ride safely on the roads. Well done to all the children who successfully completed the course. Yesterday, 36 of the Year 5 children also took part in Bike Around the Borough — an event that takes place every year! Hundreds of Hackney school children take to the roads for a mass ride around the borough, organised by the Council to provide a chance for students to practice the skills they've learned through national standards cycle training and to help them see how easy it is to travel around Hackney by bike. The riders started at Hackney Downs, travelling from there to Clissold Park, before heading on to London Fields, past Hackney Town Hall and back to Hackney Downs. Then today, many of our Cycling Team have taken part in a sponsored cycle ride — they did the last 10 miles of a 50 mile ride and have so far raised an amazing £1,750. Thanks to all the families and friends who have donated. They had beautiful weather today and cycled up the towpath to Ware. They hope to reach their target of £1950 by the end of today in order to raise money for World Bicycle Relief that will provide 20 bikes for children to ride to school in poorer countries across the world. If you can and would like to help, please click on the link: <https://www.justgiving.com/Millfields50miles>. Thank you so much to parents, Paul and Nicky, who organised the whole thing and to all the parents and staff



Millfields
Community School
Hilsea Street
Hackney
E8 0SH
TEL : 020 8985 7898

Important Dates
Summer Fair
Saturday 29th June
Sports Week
1st—5th July
Safety Awareness Week
8th—12th July
London Day
18th July
First day of Autumn Term
Weds 4th September

Attendance
Week beg: 17th June
Our school target: 96.5%
Last week: 95.1 %
Winning classes:
KS1 Brown (98.3%)
KS2 Macintosh (99.1%)
Well done!
Tuck Shop





amohi@millfields.hackney.sch.uk

Associate Assistant Head/Phase Lead for Key Stage 1

kfry@millfields.hackney.sch.uk

SENCO - Special educational needs coordinator



info@millfields.hackney.sch.uk

Senior Admin Officer - Attendance/Admissions

clubs@millfields.hackney.sch.uk

Extended School Manager/Clubs

Questions

