

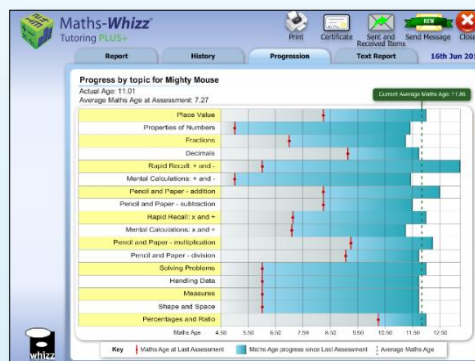
Dear Parent,

Maths-Whizz Tutoring Plus is an online personalised tutoring service which caters for each child's needs. This is an online service and can be used at any time, at home as well as in school.

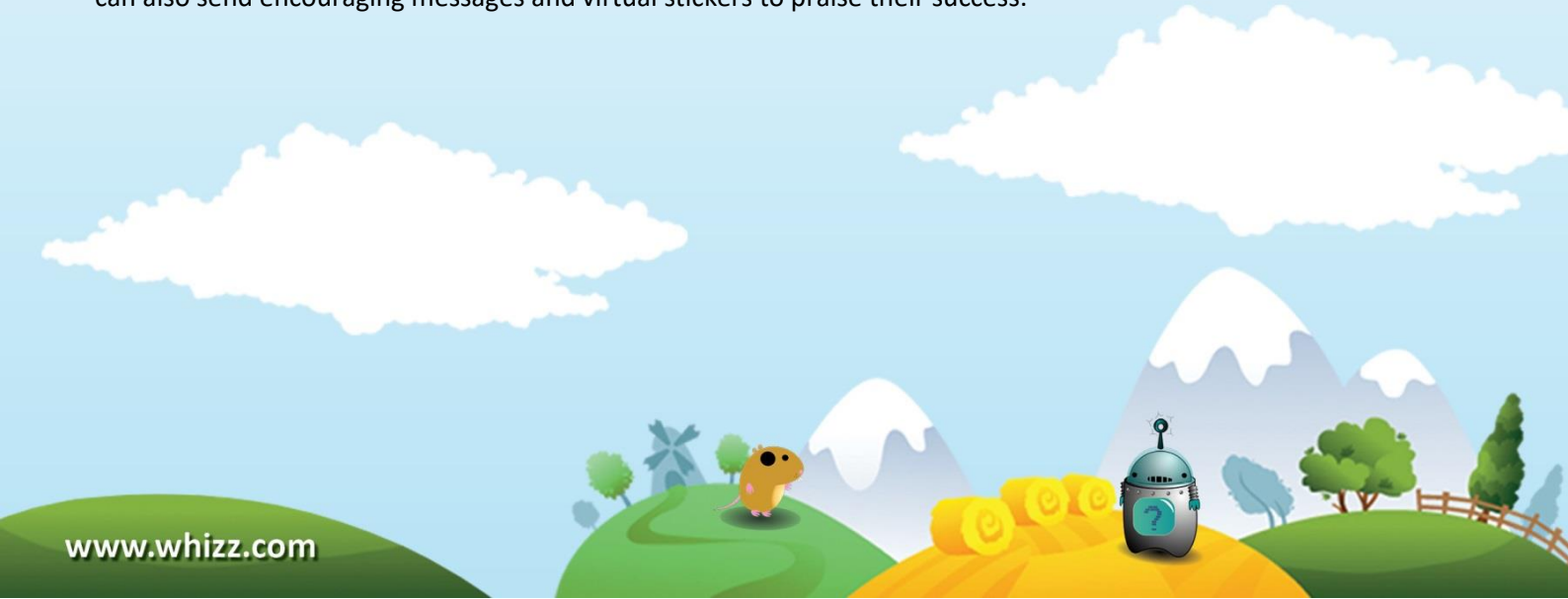
When used the recommended amount, it has shown to help children **improve and gain confidence in maths**. You, as a parent, can contribute to **getting best results** by scheduling your child to spend 20 to 30 minutes, two to three times a week, using Maths-Whizz. This can be accessed at www.whizz.com.

The recommended usage depends on your child's individual ability, measured in terms of "maths age".

- **Children who need more time to absorb maths concepts:** use Maths-Whizz Tutoring Plus for 90 minutes a week. 96% of children advance their maths ages by more than 1 year in 12 months of usage, with an average maths age improvement of more than 2 years.
- **For most children:** spend 45 to 60 minutes per week with Maths-Whizz, where the average expected improvement in maths age is between 1.3 and 1.6 years, over 12 months.
- **Faster children, or those who are gifted and talented and have maths ages well beyond their actual age:** good progress with just 30 minutes of usage per week



These reports in an upgraded Parent Dashboard will show your child's **progress, usage and overall performance**; you can also send encouraging messages and virtual stickers to praise their success.



PLEASE NOTE: To ensure your child has the best experience possible, please note the following:

Recommended Browsers

* Recommended Internet Browsers are **Google Chrome, Mozilla Firefox** and **Internet Explorer**. Some versions of Safari are less compatible with Maths-Whizz so we advise not using this browser. Recommended browsers can be downloaded free of charge.

* Ensure that your Flash Player and Internet Browser versions are up to date.

* Clear your history (cache) – details of how to do this for each browser can be found in our Top 4 FAQ: <http://www.whizz.com/help/top-5/>

* Ensure that your pop up blocker is turned off.

iPads and Tablets

To access Maths-Whizz on an **iPad** or **tablet**, please download the free '**Puffin Academy**' app and search for **Maths-Whizz** once installed. Further details of this app can be found in our blog on www.whizz.com (please click 'Blog' and search 'iPad').

Reports and Emails

For **detailed live reports** for your child's Maths-Whizz account, you can upgrade to a parent dashboard for £29.99 per annum. This will give you unlimited access to reports on their **usage, performance, history and progression**.

To do this:

- Log into your child's Maths-Whizz account
- Go to 'Console' and click on the 'Parents' button (in the bottom right hand corner)
- Follow the instructions on screen to set up your Parent Dashboard

You can also register to receive free monthly progress emails on your child's performance. Simply follow the instructions above and click 'Parent Emails'.

To learn more about Maths-Whizz and how to help your child reach their potential in maths, you can visit www.whizz.com. If you have any queries you can contact Whizz Education, the providers of Maths-Whizz, at customer.success@whizzeducation.com or call (+44) 203 328 6564 Mon-Fri, 8:30am-5pm.